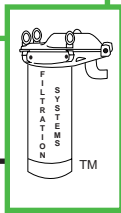


# Cartridge Filter Housings

INDUSTRIAL QUALITY



**Filtration Systems™**

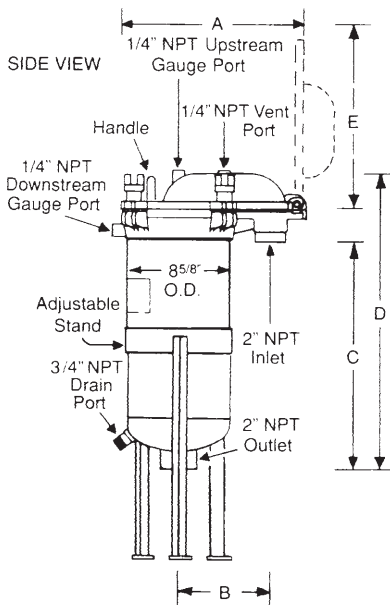
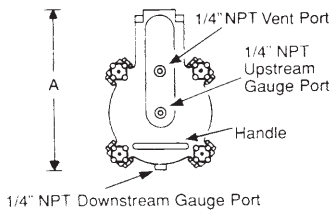
Division of Mechanical Mfg. Corporation

# MODEL NS-110



TYPE 304  
STAINLESS

TOP VIEW



## Filtration System's Cartridge Filter Housings feature these unique characteristics

Cartridge Filter Housings filter from the top (Inlet) to the bottom (Outlet) using a Cartridge Contaminant Chamber - a removable, positive sealing fixture that holds four standard cartridge filters in a "Cluster of Four" arrangement. Housings are available in three sizes to accommodate 10", 20" and 30" cartridge filters for a broad range of liquid applications. Designed to minimize exposure to contaminants by allowing the removal of the spent filters and chamber as a single unit. All of the dirt is captured in the Cartridge Contaminant Chamber. When the cartridge filters are spent, the reusable chamber (loaded with the cartridges) is easily removed. It is not necessary to clean or flush the filter vessel after use. Spare chambers can be preloaded so that new cartridge filters can replace spent ones quickly. Cartridge Filter Housings can also be used with filter bags, mesh strainer baskets and micron-rated filter cloth baskets without changes to existing piping.

### Description

Model NS-110 Cartridge Filter Housing in T-304 Stainless Steel at 150psi (250°F). Vessel holds four standard 10" cartridge filters in a removable Cartridge Contaminant Chamber.

### Specifications

Maximum Working Pressure 150psi  
 Maximum Working Temperature 250°F  
 Maximum Flow Rate: Refer to Cartridge Filter Specifications  
 Hydrostatically Tested to 250psi  
 Inlet & Outlet: 2" NPT  
 Shipping Weight: 85 lbs.

### Standard Features

Model NS-110, type 304 stainless steel, glass bead finish:  
 exterior, interior and cartridge chamber  
 Model NC-110, carbon steel, one coat shop primer, exterior

- Over-The-Top Inlet
- 360° Hinged Closure with Lid Handle
- Lid Safety Detents and Lid Stop
- Investment Casting (Lid & Body)
- Cartridge Contaminant Chamber with hardware, T-316 S/S
- Buna-N positive sealing gasket
- Gauge Ports (Upstream & Downstream) 1/4" NPT
- Vent Port 1/4" NPT
- Drain Port 3/4" NPT
- Buna-N O-Rings
- Plated Carbon Steel Hardware - Bar Knobs
- Adjustable Stainless Tripod Stand (NS-110)
- Adjustable Carbon Steel Tripod Stand (NC-110)

### Options

- Modified Connections - Flanged, Threaded or Sanitary
- Interior Grade Finishes (Including 3A Sanitary)
- Electropolish Finishes - Exterior, Interior or Both
- Perforated Support Baskets
- Micron-Rated Strainer Baskets
- Mesh & Micron Lined Baskets
- Assorted O-Ring Materials
- Assorted Positive Sealing Gaskets
- Steam & Hot Oil Jackets
- Low-Profile Horizontal Outlets
- Cartridge Contaminant Chambers (holds four 10" cartridges)
- Drain Valves & Vent Valves
- Pressure Gauges
- Available in Carbon Steel (Model NC-110) at 150psi (250°F)

| MODEL NS-110      | A       | B      | C   | D   | E       | WT. LBS. |
|-------------------|---------|--------|-----|-----|---------|----------|
| 2" NPT CONNECTION | 15 1/4" | 7 1/2" | 14" | 20" | 14 3/4" | 85       |

# MODEL NS-120



TYPE 304  
STAINLESS

## Filtration System's Cartridge Filter Housings feature these unique characteristics

Cartridge Filter Housings filter from the top (Inlet) to the bottom (Outlet) using a Cartridge Contaminant Chamber - a removable, positive sealing fixture that holds four standard cartridge filters in a "Cluster of Four" arrangement. Housings are available in three sizes to accommodate 10", 20" and 30" cartridge filters for a broad range of liquid applications. Designed to minimize exposure to contaminants by allowing the removal of the spent filters and chamber as a single unit. All of the dirt is captured in the Cartridge Contaminant Chamber. When the cartridge filters are spent, the reusable chamber (loaded with the cartridges) is easily removed. It is not necessary to clean or flush the filter vessel after use. Spare chambers can be preloaded so that new cartridge filters can replace spent ones quickly. Cartridge Filter Housings can also be used with filter bags, mesh strainer baskets and micron-rated filter cloth baskets without changes to existing piping.

## Description

Model NS-120 Cartridge Filter Housing in T-304 Stainless Steel at 150psi (250°F). Vessel holds four standard 20" cartridge filters in a removable Cartridge Contaminant Chamber.

## Specifications

Maximum Working Pressure 150psi  
 Maximum Working Temperature 250°F  
 Maximum Flow Rate: Refer to Cartridge Filter Specifications  
 Hydrostatically Tested to 250psi  
 Inlet & Outlet: 2" NPT  
 Shipping Weight: 100 lbs.

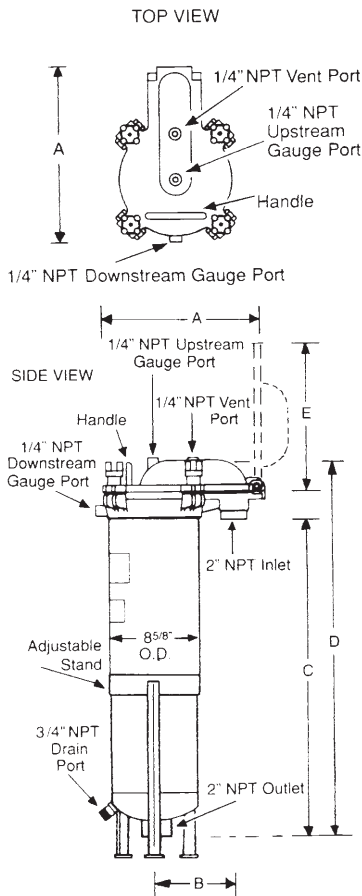
## Standard Features

Model NS-120, type 304 stainless steel, glass bead finish:  
 exterior, interior and cartridge chamber  
 Model NC-120, carbon steel, one coat shop primer, exterior

- Over-The-Top Inlet
- 360° Hinged Closure With Lid Handle
- Lid Safety Detents and Lid Stop
- Investment Casting (Lid & Body)
- Cartridge Contaminant Chamber with hardware, T-316 S/S
- Buna-N positive sealing gasket
- Gauge Ports (Upstream & Downstream) 1/4" NPT
- Vent Port 1/4" NPT
- Drain Port 3/4" NPT
- Buna-N O-Rings
- Plated Carbon Steel Hardware - Bar Knobs
- Adjustable Stainless Tripod Stand (NS-120)
- Adjustable Carbon Steel Tripod Stand (NC-120)

## Options

- Modified Connections - Flanged, Threaded or Sanitary
- Interior Grade Finishes (Including 3A Sanitary)
- Electropolish Finishes - Exterior, Interior or Both
- Perforated Support Baskets
- Micron-Rated Strainer Baskets
- Mesh & Micron Lined Baskets
- Assorted O-Ring Materials
- Assorted Positive Sealing Gaskets
- Steam & Hot Oil Jackets
- Low-Profile Horizontal Outlets
- Cartridge Contaminant Chambers (holds four 20" cartridges)
- Drain Valves & Vent Valves
- Pressure Gauges
- Available in Carbon Steel (Model NC-120) at 150psi (250°F)



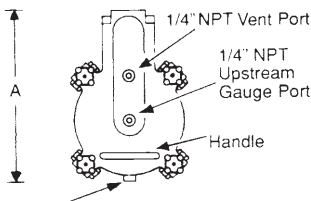
| MODEL NS-120      | A       | B      | C   | D   | E       | WT. LBS. |
|-------------------|---------|--------|-----|-----|---------|----------|
| 2" NPT CONNECTION | 15 1/4" | 7 1/2" | 28" | 34" | 14 3/4" | 100      |

# MODEL NS-130

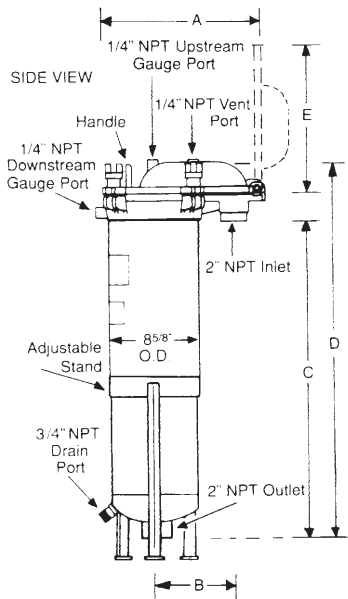


TYPE 304  
STAINLESS

TOP VIEW



1/4" NPT Downstream Gauge Port



| MODEL NS-130      | A       | B      | C   | D   | E       | WT. LBS. |
|-------------------|---------|--------|-----|-----|---------|----------|
| 2" NPT CONNECTION | 15 1/2" | 7 1/2" | 32" | 38" | 14 3/4" | 110      |

## Filtration System's Cartridge Filter Housings feature these unique characteristics

Cartridge Filter Housings filter from the top (Inlet) to the bottom (Outlet) using a Cartridge Contaminant Chamber - a removable, positive sealing fixture that holds four standard cartridge filters in a "Cluster of Four" arrangement. Housings are available in three sizes to accommodate 10", 20" and 30" cartridge filters for a broad range of liquid applications. Designed to minimize exposure to contaminants by allowing the removal of the spent filters and chamber as a single unit. All of the dirt is captured in the Cartridge Contaminant Chamber. When the cartridge filters are spent, the reusable chamber (loaded with the cartridges) is easily removed. It is not necessary to clean or flush the filter vessel after use. Spare chambers can be preloaded so that new cartridge filters can replace spent ones quickly. Cartridge Filter Housings can also be used with filter bags, mesh strainer baskets and micron-rated filter cloth baskets without changes to existing piping.

### Description

Model NS-130 Cartridge Filter Housing in T-304 Stainless Steel at 150psi (250°F). Vessel holds four standard 30" cartridge filters in a removable Cartridge Contaminant Chamber.

### Specifications

Maximum Working Pressure 150psi  
 Maximum Working Temperature 250°F  
 Maximum Flow Rate: Refer to Cartridge Filter Specifications  
 Hydrostatically Tested to 250psi  
 Inlet & Outlet: 2" NPT  
 Shipping Weight: 110 lbs.

### Standard Features

Model NS-130, type 304 stainless steel, glass bead finish:  
 exterior, interior and cartridge chamber  
 Model NC-130, carbon steel, one coat shop primer, exterior

- Over-The-Top Inlet
- 360° Hinged Closure with Lid Handle
- Lid Safety Detents and Lid Stop
- Investment Casting (Lid & Body)
- Cartridge Contaminant Chamber with hardware, T-316 S/S
- Buna-N positive sealing gasket
- Gauge Ports (Upstream & Downstream) 1/4" NPT
- Vent Port 1/4" NPT
- Drain Port 3/4" NPT
- Buna-N O-Rings
- Plated Carbon Steel Hardware - Bar Knobs
- Adjustable Stainless Tripod Stand (NS-130)
- Adjustable Carbon Steel Tripod Stand (NC-130)

### Options

- Modified Connections - Flanged, Threaded or Sanitary
- Interior Grade Finishes (Including 3A Sanitary)
- Electropolish Finishes - Exterior, Interior or Both
- Perforated Support Baskets
- Micron-Rated Strainer Baskets
- Mesh & Micron Lined Baskets
- Assorted O-Ring Materials
- Assorted Positive Sealing Gaskets
- Steam & Hot Oil Jackets
- Low-Profile Horizontal Outlets
- Cartridge Contaminant Chambers (holds four 30" cartridges)
- Drain Valves & Vent Valves
- Pressure Gauges
- Available in Carbon Steel (Model NC-130) at 150psi (250°F)